

MARVEL

ANT-MAN

© 2015 MARVEL 

IN THEATERS JULY 17



ACTIVITY PACK & COLORING SHEET

PG-13

© 2015 MARVEL 

MARVEL ANT-MAN

© 2015 MARVEL



IN THEATERS JULY 17

Scissors icon at the top center of the card grid.

<p>ANT-MAN</p> <p>MARVEL ANT-MAN</p> <p>IN THEATERS JULY 17</p> <p>© 2015 MARVEL</p>	<p>DARREN CROSS</p> <p>MARVEL ANT-MAN</p> <p>IN THEATERS JULY 17</p> <p>© 2015 MARVEL</p>	<p>HANK PYM</p> <p>MARVEL ANT-MAN</p> <p>IN THEATERS JULY 17</p> <p>© 2015 MARVEL</p>
<p>ANT-MAN</p> <p>MARVEL ANT-MAN</p> <p>IN THEATERS JULY 17</p> <p>© 2015 MARVEL</p>	<p>DARREN CROSS</p> <p>MARVEL ANT-MAN</p> <p>IN THEATERS JULY 17</p> <p>© 2015 MARVEL</p>	<p>HANK PYM</p> <p>MARVEL ANT-MAN</p> <p>IN THEATERS JULY 17</p> <p>© 2015 MARVEL</p>

Scissors icon at the bottom center of the card grid.

PG-13

MATCHING PAIRS GAME

© 2015 MARVEL

MARVEL ANT-MAN

© 2015 MARVEL



IN THEATERS JULY 17

Scissors icon at top center and bottom right of the card grid.

<p>HOPE VAN DYNE</p> <p>MARVEL ANT-MAN IN THEATERS JULY 17</p> <p>© 2015 MARVEL</p>	<p>LUIS</p> <p>MARVEL ANT-MAN IN THEATERS JULY 17</p> <p>© 2015 MARVEL</p>	<p>PAXTON</p> <p>MARVEL ANT-MAN IN THEATERS JULY 17</p> <p>© 2015 MARVEL</p>
<p>HOPE VAN DYNE</p> <p>MARVEL ANT-MAN IN THEATERS JULY 17</p> <p>© 2015 MARVEL</p>	<p>LUIS</p> <p>MARVEL ANT-MAN IN THEATERS JULY 17</p> <p>© 2015 MARVEL</p>	<p>PAXTON</p> <p>MARVEL ANT-MAN IN THEATERS JULY 17</p> <p>© 2015 MARVEL</p>

PG-13

MATCHING PAIRS GAME

© 2015 MARVEL

MARVEL ANT-MAN

© 2015 MARVEL



IN THEATERS JULY 17

Scissors icon at top center

 <p>Scissors icon at top left</p>		 <p>Scissors icon at top left</p>
 <p>Scissors icon at top left</p>		 <p>Scissors icon at top left</p>

Scissors icon at bottom right

PG-13

MATCHING PAIRS GAME

© 2015 MARVEL

MARVEL
ANT-MAN
© 2015 MARVEL MARVEL



IN THEATERS JULY 17

INSTRUCTIONS

- ▶ Have an adult carefully cut out each card.
- ▶ Mix up the cards and lay them in rows, face down.
- ▶ Set your timer and start the game.
- ▶ Turn over any two cards, if the two cards match, keep them, if they don't match, turn them back over and remember what was on each card.
- ▶ The game is over when all the cards have been matched.
- ▶ The player that matches all the pairs in the quickest time wins.

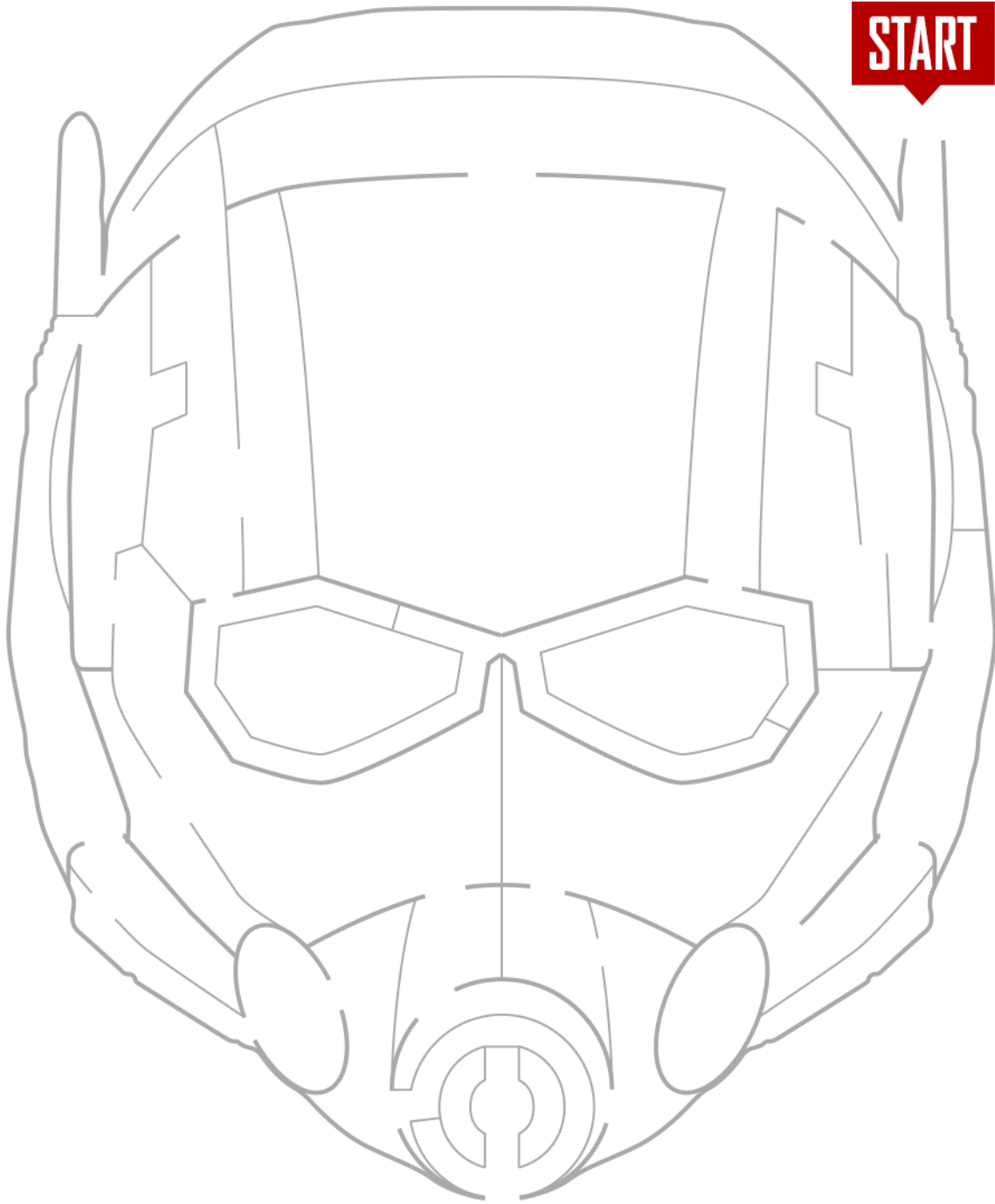


MARVEL
ANT-MAN

© 2015 MARVEL MARVEL



IN THEATERS JULY 17



START

FINISH

PG-13

MAZE

© 2015 MARVEL MARVEL

MARVEL
ANT-MAN

© 2015 MARVEL MARVEL



IN THEATERS JULY 17



▶ Have an adult carefully cut out the mask and the circles marked with crosses.

▶ Tie a length of string through each hole.

PG-13

MASK

© 2015 MARVEL MARVEL

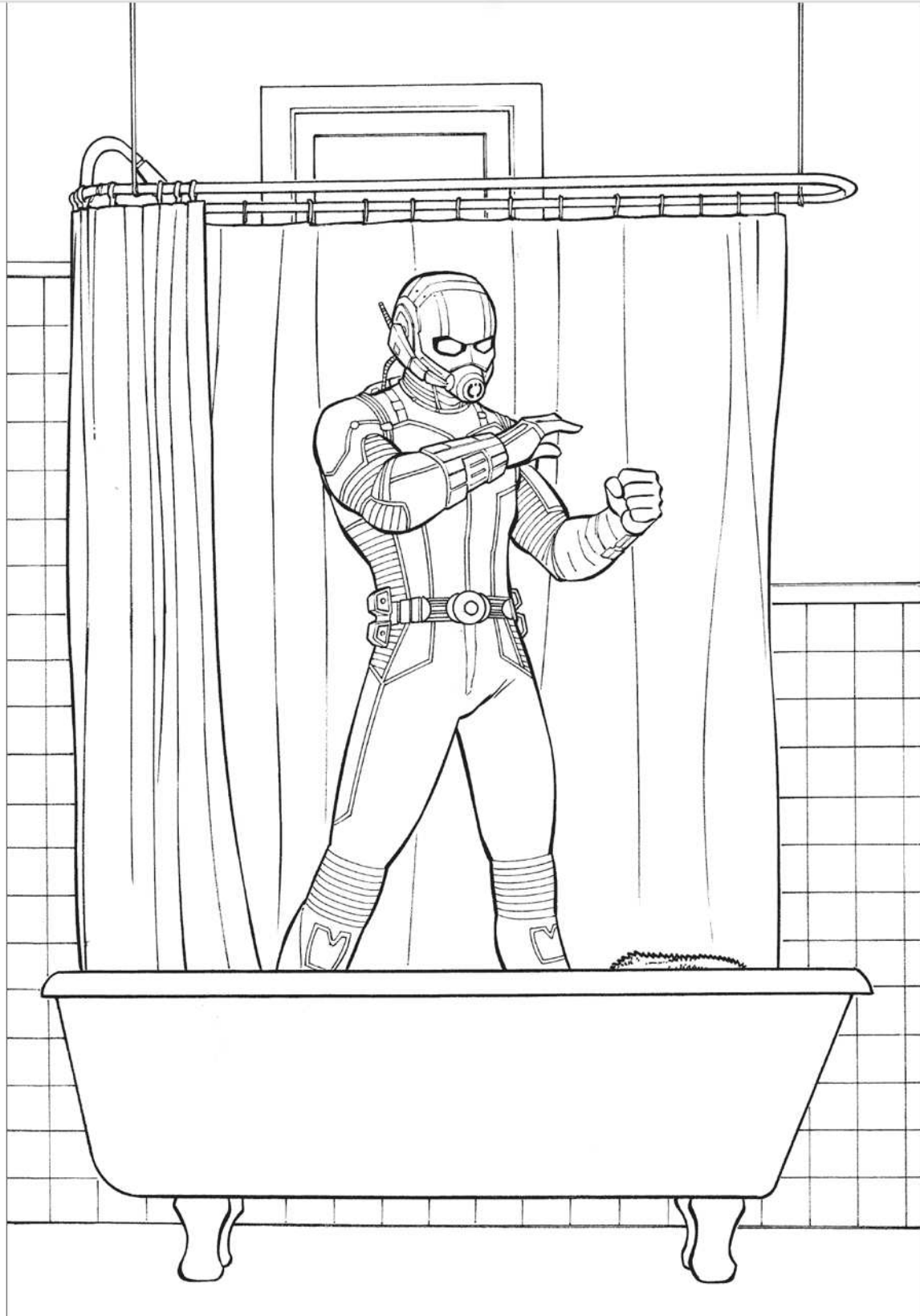
MARVEL

ANT-MAN

© 2015 MARVEL MARVEL



IN THEATERS JULY 17



PG-13

COLORING ACTIVITY

© 2015 MARVEL MARVEL

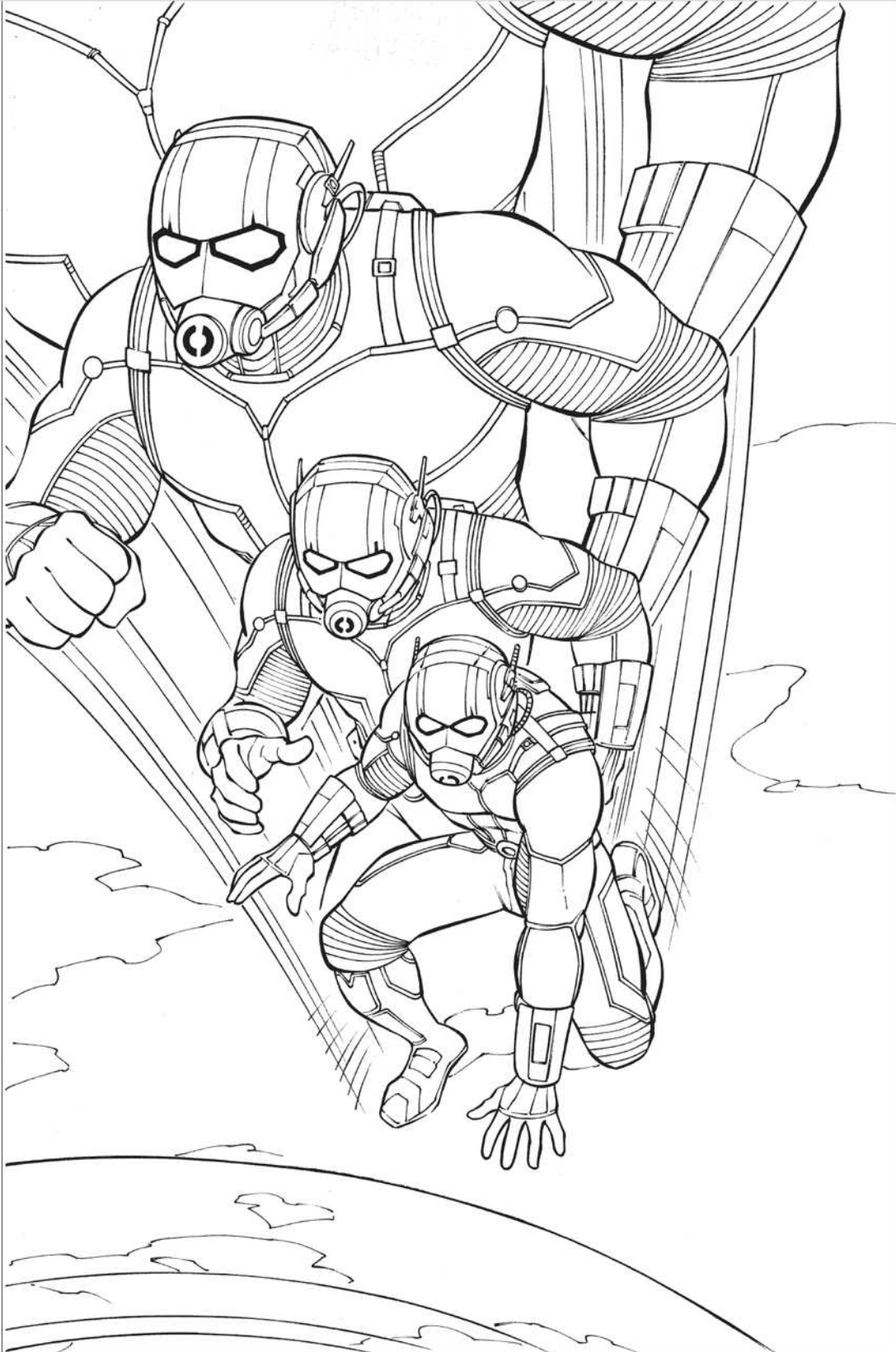
MARVEL

ANT-MAN

© 2015 MARVEL



IN THEATERS JULY 17



PG-13

COLORING ACTIVITY

© 2015 MARVEL

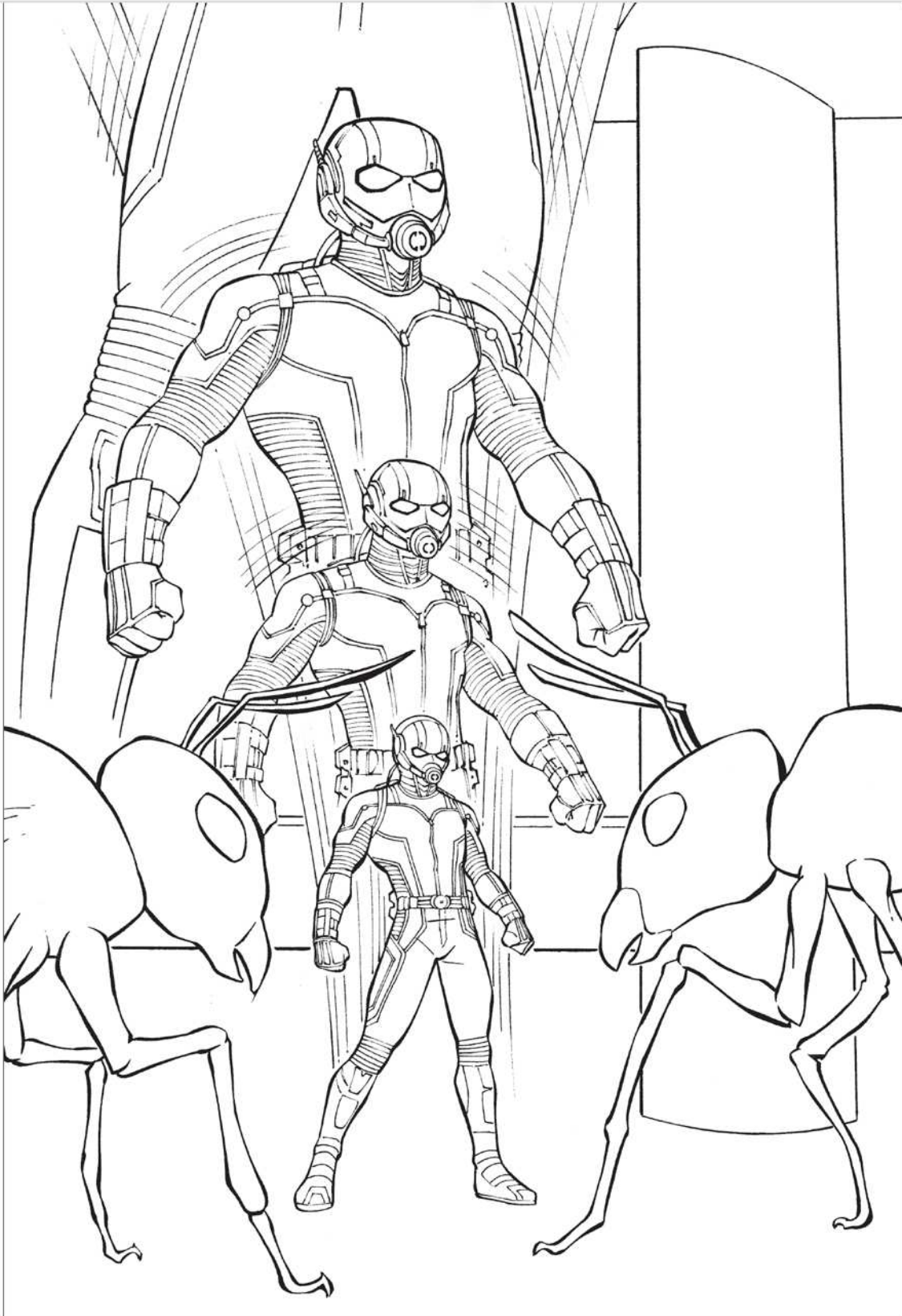
MARVEL

ANT-MAN

© 2015 MARVEL MARVEL



IN THEATERS JULY 17



PG-13

COLORING ACTIVITY

© 2015 MARVEL MARVEL

MARVEL

ANT-MAN

© 2015 MARVEL MARVEL



IN THEATERS JULY 17



PG-13

COLORING ACTIVITY

© 2015 MARVEL MARVEL

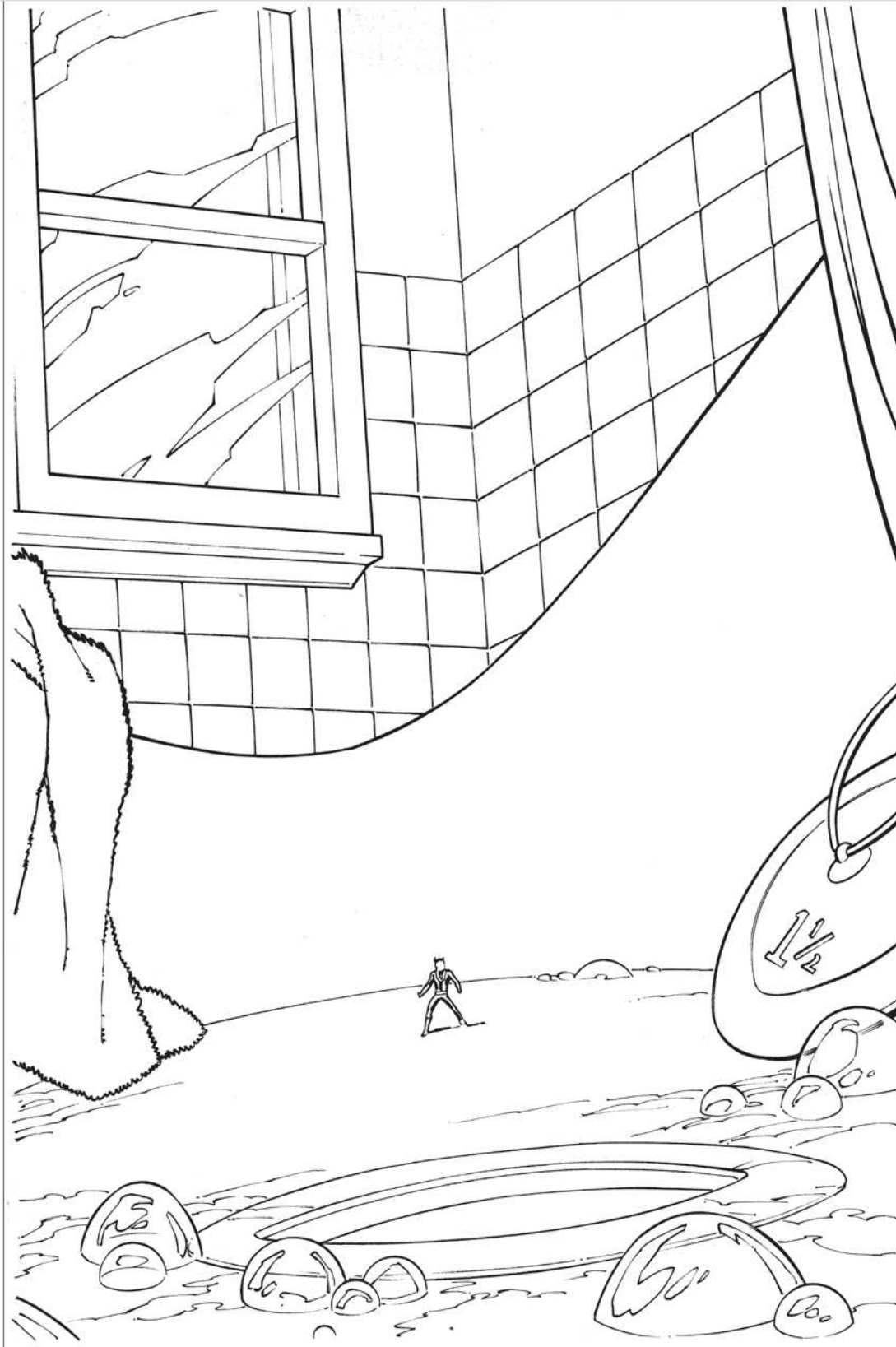
MARVEL

ANT-MAN

© 2015 MARVEL



IN THEATERS JULY 17



PG-13

SPOT THE DIFFERENCE

© 2015 MARVEL

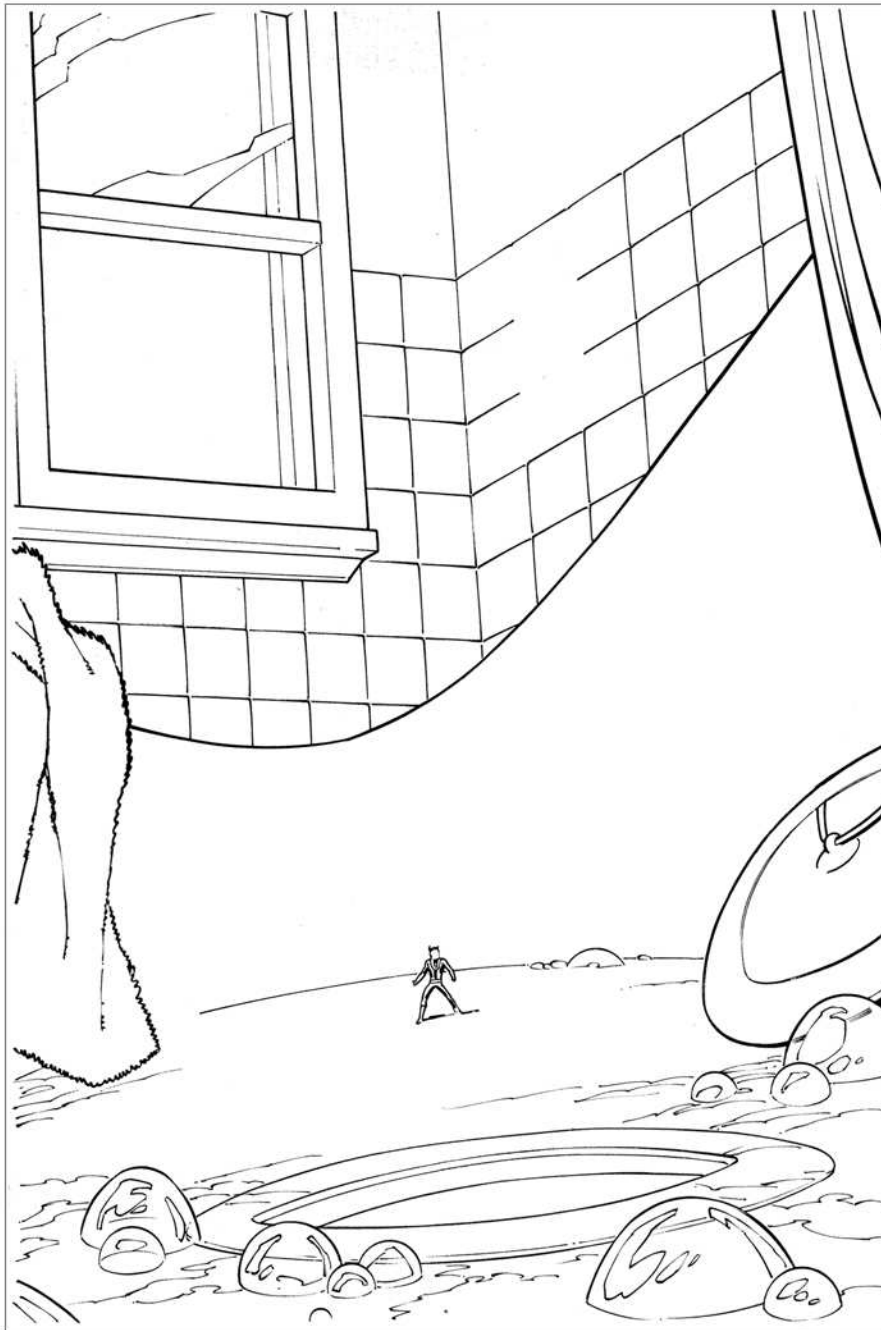
MARVEL ANT-MAN

© 2015 MARVEL MARVEL



IN THEATERS JULY 17

Can you spot five things on this page that are different from the last page? Circle them.



ANSWERS ON THE LAST PAGE

PG-13

SPOT THE DIFFERENCE

© 2015 MARVEL MARVEL

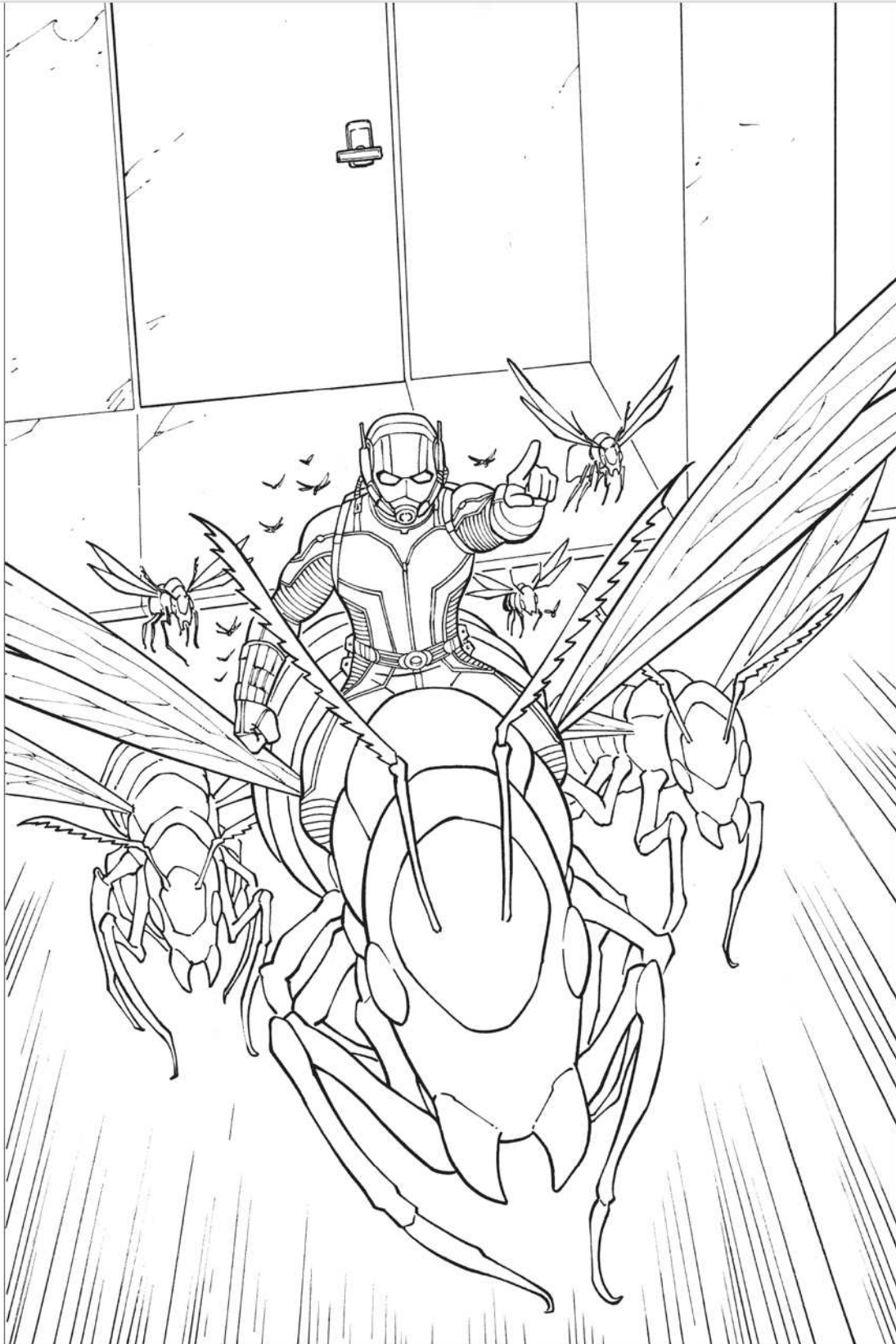
MARVEL

ANT-MAN

© 2015 MARVEL MARVEL



IN THEATERS JULY 17



PG-13

SPOT THE DIFFERENCE

© 2015 MARVEL MARVEL

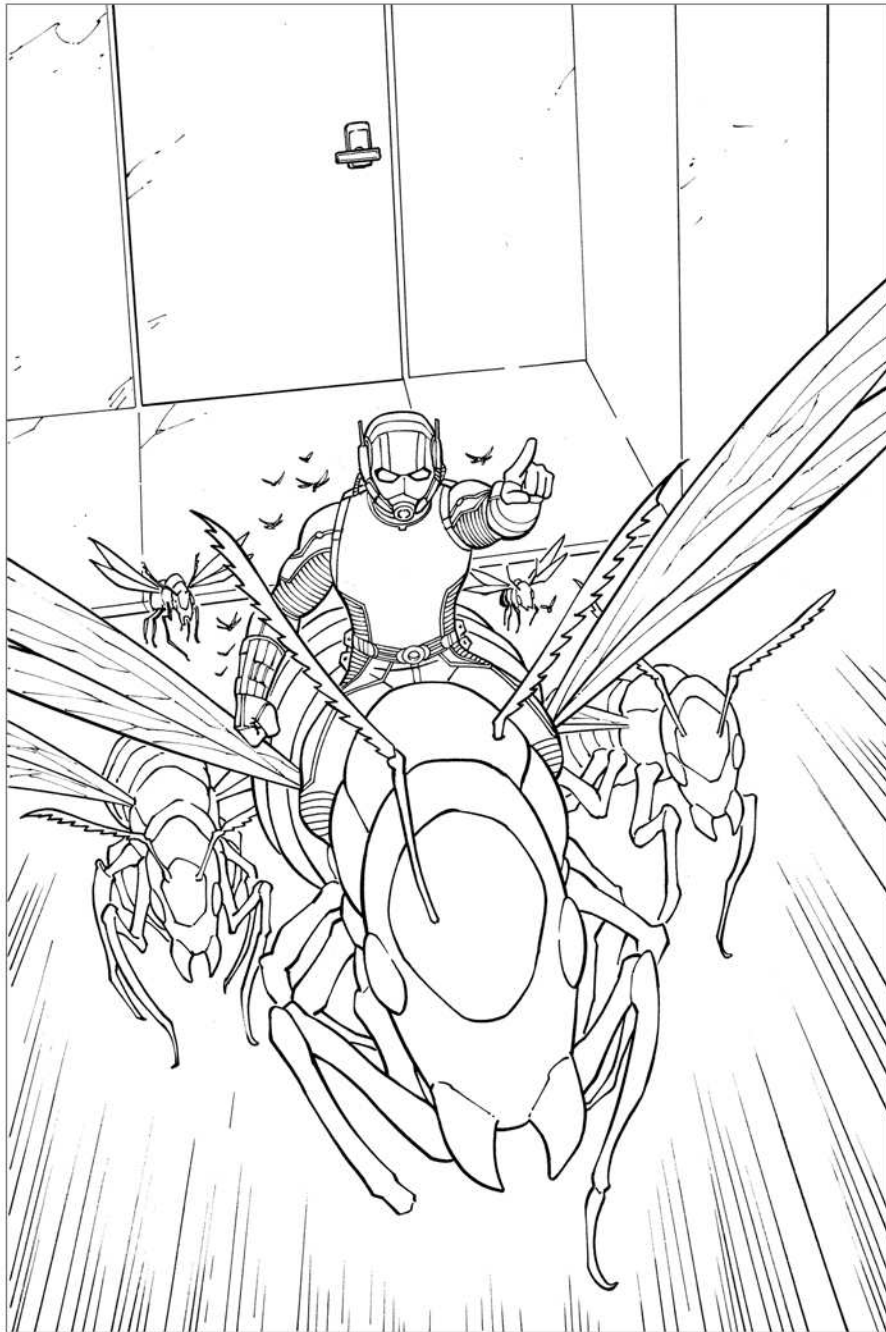
MARVEL
ANT-MAN

© 2015 MARVEL MARVEL



IN THEATERS JULY 17

Can you spot five things on this page that are different from the last page? Circle them.



ANSWERS ON THE LAST PAGE

PG-13

SPOT THE DIFFERENCE

© 2015 MARVEL MARVEL

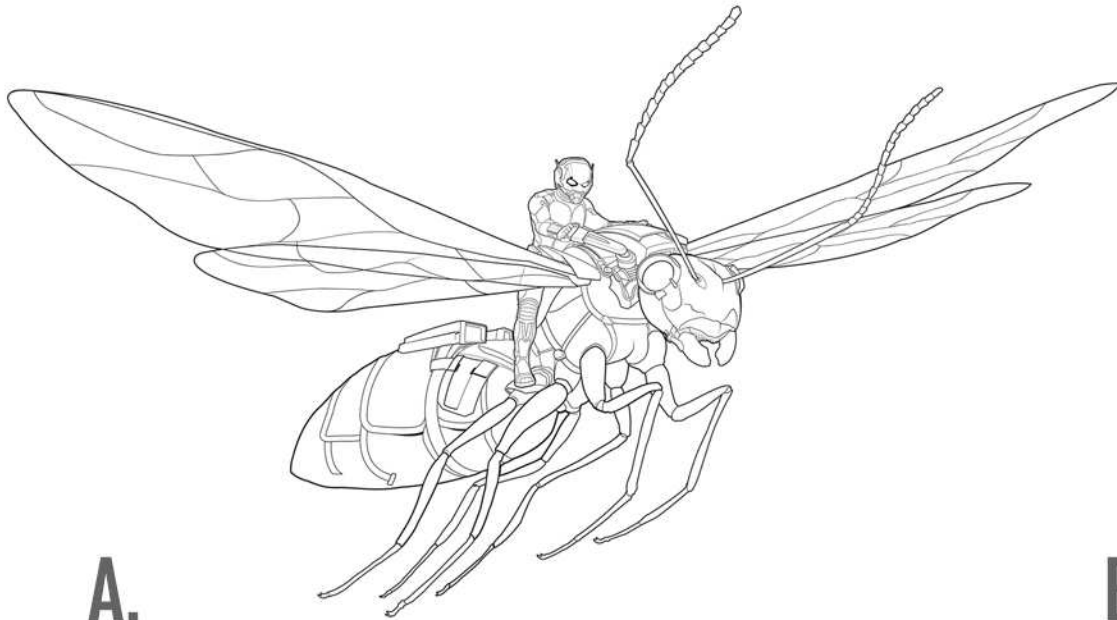
MARVEL
ANT-MAN

© 2015 MARVEL MARVEL



IN THEATERS JULY 17

Which one is the matching shadow?



A.

B.



C.

D.



THE ANSWER IS C

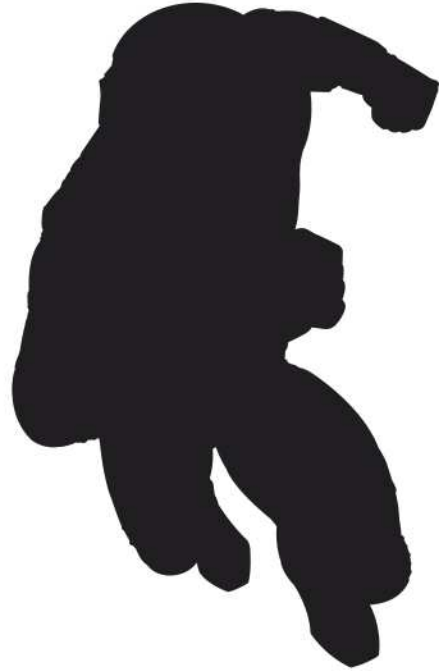
MARVEL
ANT-MAN

© 2015 MARVEL MARVEL



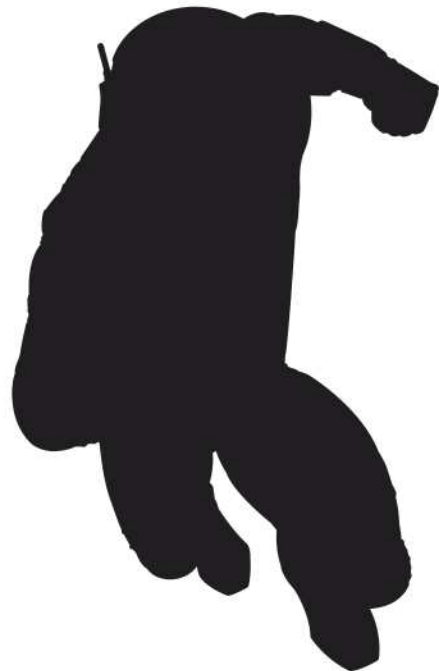
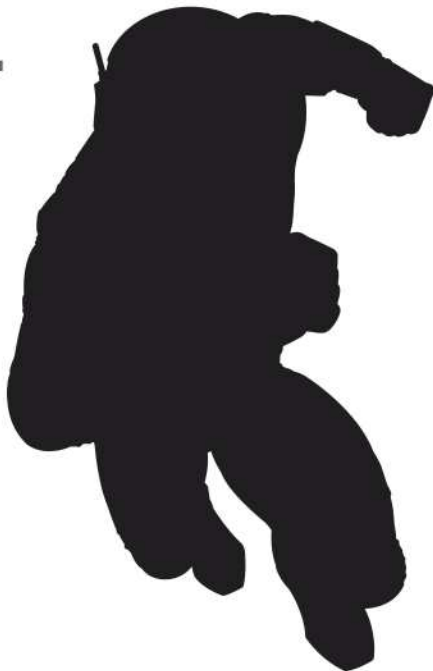
IN THEATERS JULY 17

Which one is the matching shadow?



A.

B.



C.

THE ANSWER IS B

MARVEL ANT-MAN

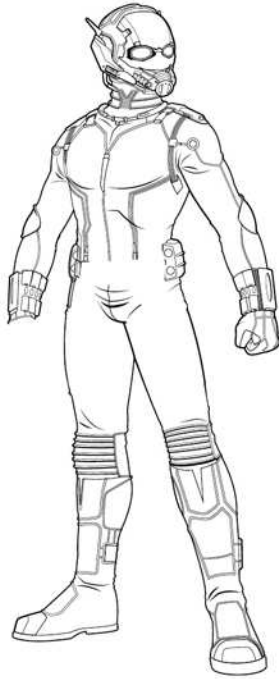
© 2015 MARVEL MARVEL



IN THEATERS JULY 17

Which two images are exactly the same?

A.



B.



C.



D.



THE ANSWER IS B AND C

PG-13

SPOT THE DIFFERENCE

© 2015 MARVEL MARVEL

MARVEL ANT-MAN

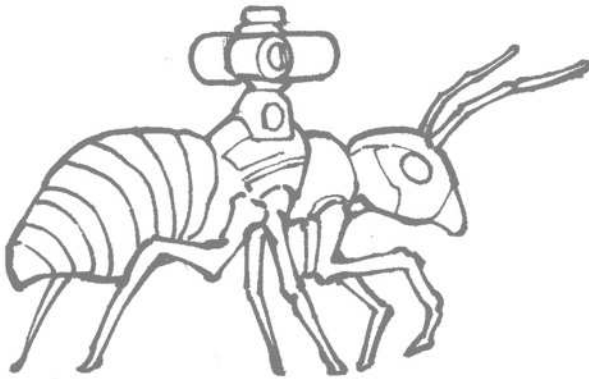
© 2015 MARVEL MARVEL



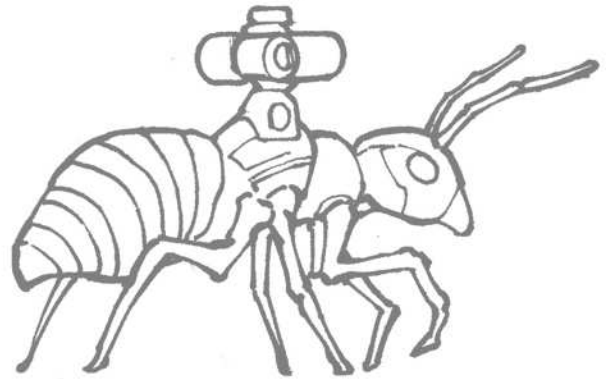
IN THEATERS JULY 17

Which ant is not like the others?

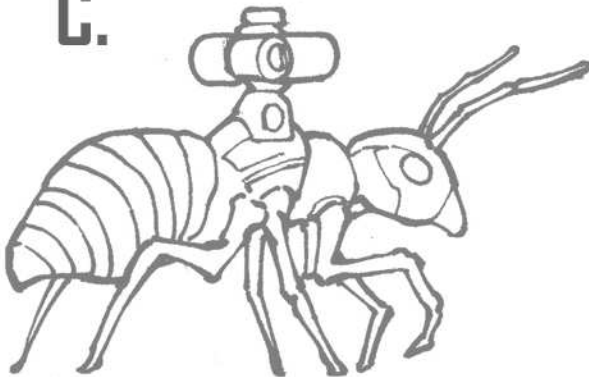
A.



B.



C.



D.



THE ANSWER IS D

PG-13

SPOT THE DIFFERENCE

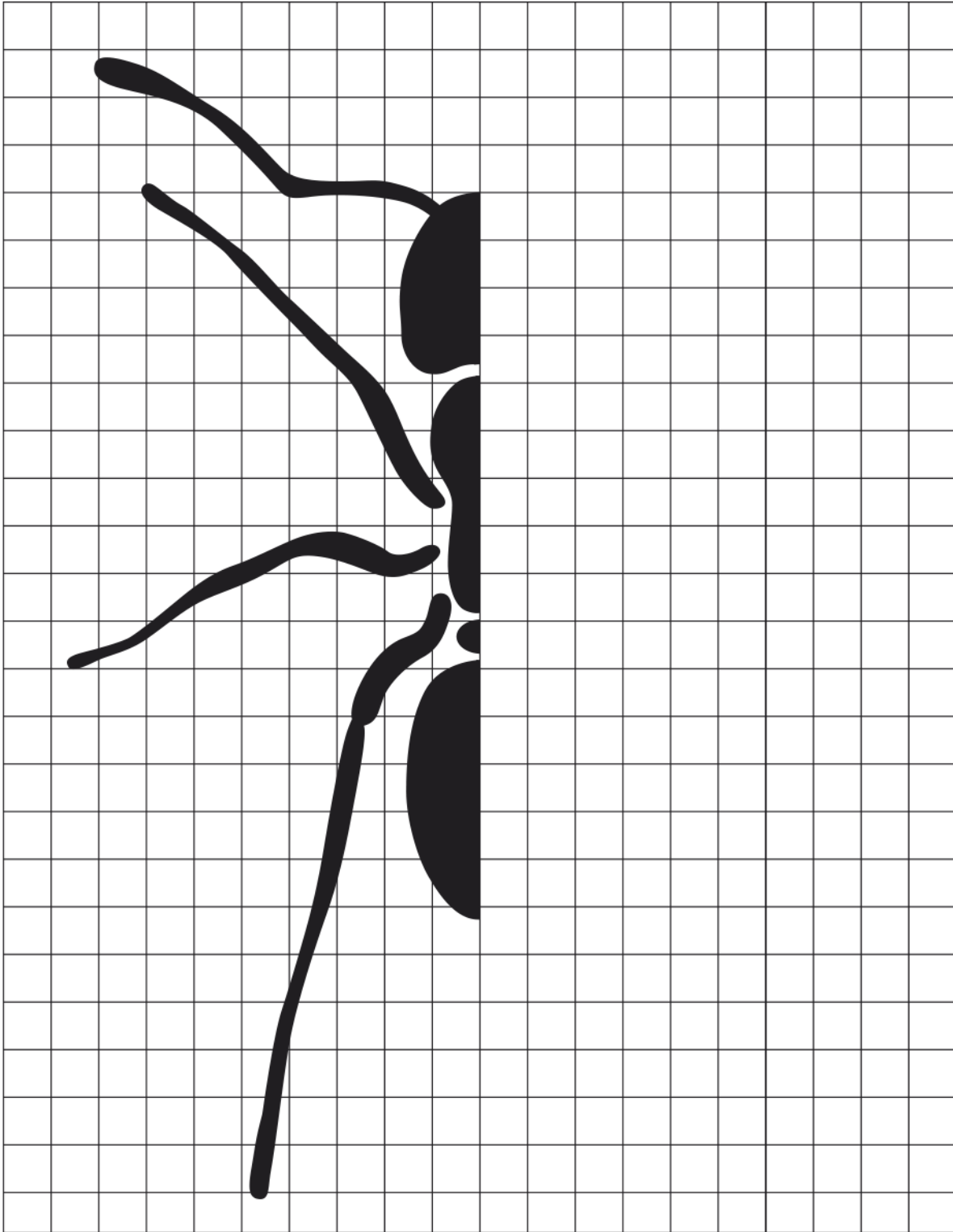
© 2015 MARVEL MARVEL

MARVEL
ANT-MAN

© 2015 MARVEL MARVEL



IN THEATERS JULY 17



PG-13

DRAW THE ANT

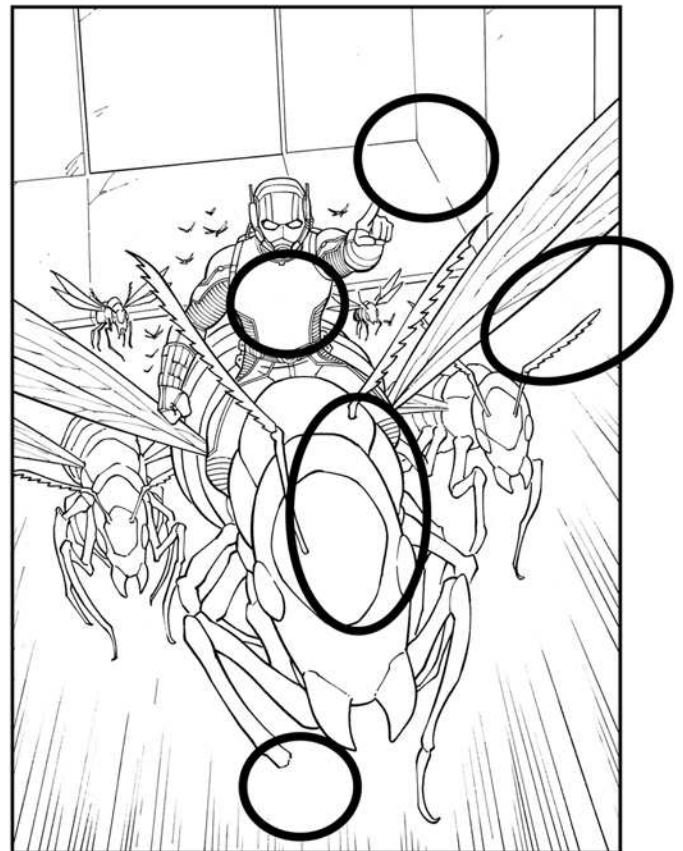
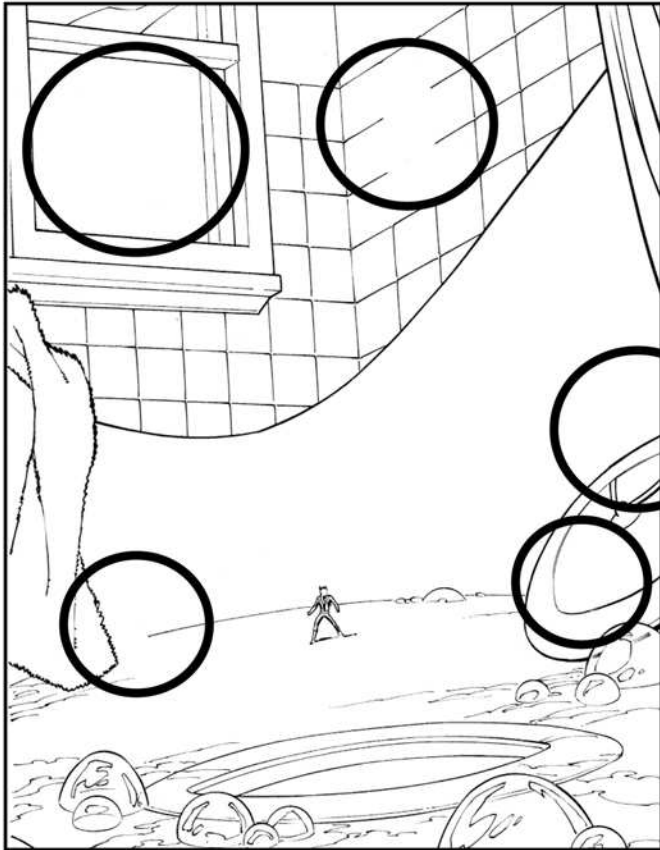
© 2015 MARVEL MARVEL

MARVEL
ANT-MAN

© 2015 MARVEL MARVEL



IN THEATERS JULY 17



PG-13

SPOT THE DIFFERENCE ANSWERS

© 2015 MARVEL MARVEL