

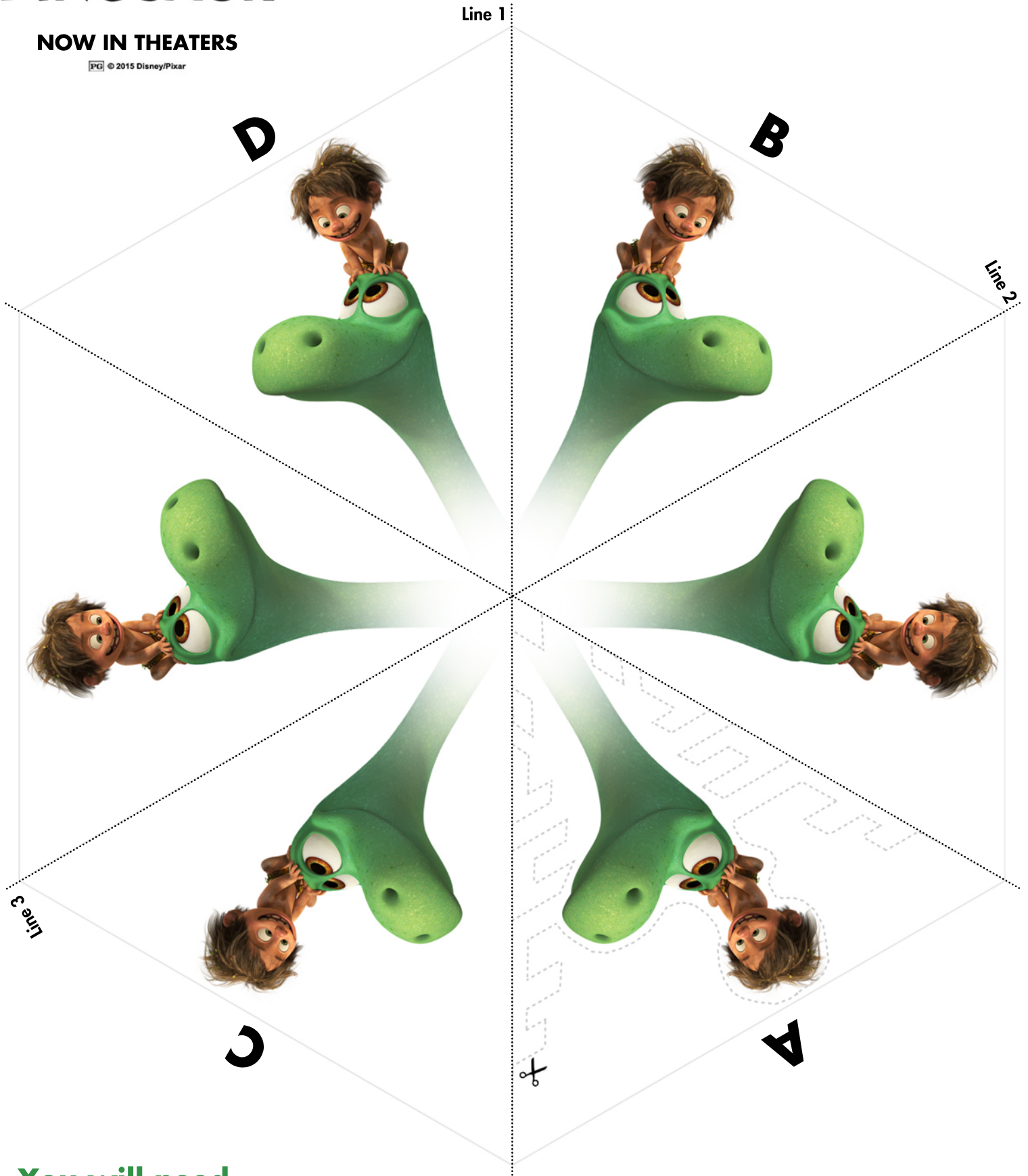
Disney · PIXAR
**THE GOOD
DINOSAUR**

NOW IN THEATERS

PG © 2015 Disney/Pixar

Make a Dino-Snowflake

See page 2 for full instructions



You will need...

To cut out the snowflake, you will need a craft knife or a pair of sharp scissors. Always ask an adult first and be very careful when cutting

Disney · PIXAR
**THE GOOD
DINOSAUR**

NOW IN THEATERS

PG © 2015 Disney/Pixar

Make a Dino-Snowflake

Step 1

Fold the whole page in half along Line 1 and set it down with 'B' and 'A' facing up (Fig.1)

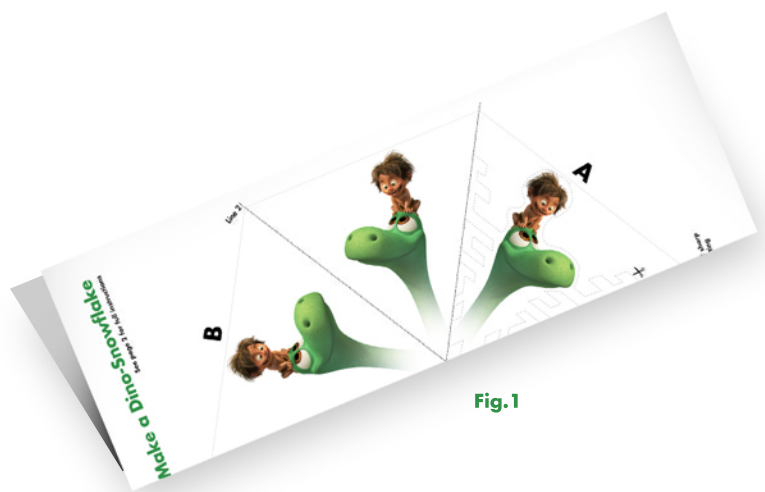


Fig.1

Step 2

Fold forwards along Line 2 so that 'D' and 'A' are facing up (Fig.2)



Fig.2

Step 3

Turn the paper over so that 'C' and 'B' are facing up (Fig.3)



Fig.3

Step 4

Fold along Line 3, so that you now have side 'A' on top and side 'D' on the back (Fig.4)

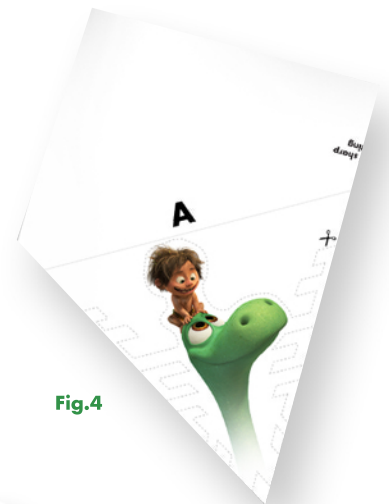


Fig.4

Step 5

Being very careful, use a craft knife or a pair of scissors to cut along the dotted lines (Fig.5)



Fig.5

Step 6

Unfold your Dino-Snowflake! (Fig.6)



Fig.6